



SONY

Price Index / Earnings

Your total touchscreen solution

Touch overlays for BRAVIA Professional Displays

Engage audiences with a touch

Transform your BRAVIA Professional Display* into a super-size touch enabled interactive terminal with a choice of responsive, high quality touchscreen overlays.

* BRAVIA Professional Display available separately

Responsive, accurate multi-touch performance

Audience engagement is right at your fingertips. Customers and colleagues can't keep their hands off these big, beautiful screens: 10 multi-touch points ensure accurate, responsive performance across the entire display area.

Wide range of screen size options

Go as large as you like. There's a full range of touch-enabled BRAVIA Professional Display solutions in screen sizes from 43" right up to 100" – all offering fabulous contrast, rich colours and exquisite detail in 4K.

* Capacitive models up to 75"

Add that finishing touch

We offer a choice of touchscreen overlay solutions from Infrared to Capacitive to suit a wide range of interactive applications for corporate and educational environments.

Big audience appeal, low running costs

Powered by direct USB connection, the energy-efficient touch overlay keeps running costs down.

In touch with your customers everywhere

Touch-enabled BRAVIA Professional Displays* are ideal for a wide range of interactive signage and information kiosk applications – from schools, universities, museums, libraries, boardrooms and offices to hotel lobbies, hospitality zones, retail stores and visitor attractions.

* BRAVIA Professional Display available separately

Looks great in every light

The touch overlay's tough anti-glare surface ensures optimum visibility, even in the sunniest environments.

Quick and easy to install and set up

Simple, fuss-free installation and set up allows deployment of your interactive touchscreen solution in minutes.

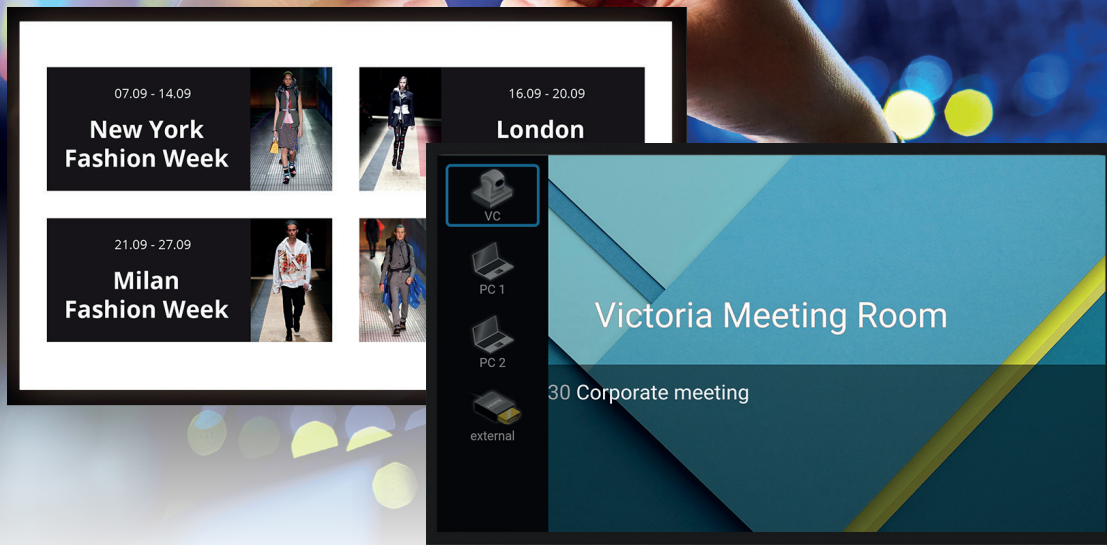
Visit www.pro.sony/en_EU/BRAVIA-interactive

Models - Infrared

Specifications		TO-1243-IR10	TO-1249-IR10	TO-1255-IR10	TO-1265-IR10	TO-1275-IR10	TO-1285-IR10	TO-12100-IR10
Overlay	Size (diagonal)	43"	49"	55"	65"	75"	85"	100"
	Compatible with	FW-43XE8001	FW-49XE8001 and FW-49XE9001	FW-55XE8001 and FW-55XE9001	FW-65XE8501 and FW-65XE9001	FW-75XE8501 and FW-75XE9001	FW-85XD8501	FWD-100ZD9501
Technology	Technology	IR	IR	IR	IR	IR	IR	IR
	Number of touch points	10 points	10 points	10 points	10 points	10 points	10 points	10 points
	Response time	<8ms	<8ms	<8ms	<8ms	<8ms	<8ms	<8ms
	Max touch point accuracy	1mm	1mm	1mm	1mm	1mm	1mm	1mm
	Touch durability	Unlimited	Unlimited	Unlimited	Unlimited	Unlimited	Unlimited	Unlimited
Environment	Operating Temperature	-20°C - 70°C	-20°C - 70°C	-20°C - 70°C	-20°C - 70°C	-20°C - 70°C	-20°C - 70°C	-20°C - 70°C
	Storage Temperature	-40°C-85°C	-40°C-85°C	-40°C-85°C	-40°C-85°C	-40°C-85°C	-40°C-85°C	-40°C-85°C
	Operating Humidity	10%-90% RH (non-condensing)	10%-90% RH (non-condensing)	10%-90% RH (non-condensing)	10%-90% RH (non-condensing)	10%-90% RH (non-condensing)	10%-90% RH (non-condensing)	10%-90% RH (non-condensing)
	Storage Humidity	10%-90% RH	10%-90% RH	10%-90% RH	10%-90% RH	10%-90% RH	10%-90% RH	10%-90% RH
Glass	Anti-glare	Yes	Yes	Yes	Yes	Yes	Yes	Yes
	Thickness (mm)	3mm	3mm	3mm	4mm	4mm	5mm	5mm
Power	Power input	USB HID. No driver required	USB HID. No driver required	USB HID. No driver required	USB HID. No driver required	USB HID. No driver required	USB HID. No driver required	USB HID. No driver required
	Power consumption (W)	<2W	<2W	<2W	<2W	<2W	<2W	<2W
Design	Color	Black	Black	Black	Black	Black	Black	Black
	Bezel size (mm)	25mm	25mm	25mm	28mm	28mm	30mm	30mm
Dimensions	Overlay Only (WxHxD mm) (Approx.)	997 x 584 x 30 mm	1126 x 660 x 31 mm	1262 x 737 x 32 mm	1489 x 864 x 36 mm	1708 x 988 x 30 mm	1968 x 1160 x 30 mm	2360 x 1400 x 40 mm
	Package Carton (WxHxD mm) (Approx.)	1080 x 600 x 150 mm	1260 x 760 x 150 mm	1380 x 860 x 150 mm	1615 x 990 x 150 mm	1870 x 1150 x 150 mm	2090 x 1280 x 150 mm	2480 x 1500 x 600 mm
Weight	Overlay Only (KG) (Approx.)	7 kg	9 kg	12 kg	18 kg	30 kg	50 kg	75 kg
	Package Carton (KG) (Approx.)	11 kg	13 kg	15 kg	21 kg	35 kg	58 kg	80 kg
Service and warranty	Warranty	3 years with advanced exchange	3 years with advanced exchange	3 years with advanced exchange	3 years with advanced exchange	3 years with advanced exchange	3 years with advanced exchange	3 years with advanced exchange

Models - Capacitive

Specifications		TO-1243-CA10	TO-1249-CA10	TO-1255-CA10	TO-1265-CA10	TO-1275-CA10
Overlay	Size (diagonal)	43"	49"	55"	65"	75"
	Compatible with	FW-43XE8001	FW-49XE8001 and FW-49XE9001	FW-55XE8001 and FW-55XE9001	FW-65XE8501 and FW-65XE9001	FW-75XE8501 and FW-75XE9001
Technology	Technology	Capacitive	Capacitive	Capacitive	Capacitive	Capacitive
	Number of touch points	10 points	10 points	10 points	10 points	10 points
	Response time	<16ms	<16ms	<16ms	<16ms	<16ms
	Max touch point accuracy	3mm	3mm	3mm	3mm	3mm
	Touch durability	Unlimited	Unlimited	Unlimited	Unlimited	Unlimited
Environment	Operating Temperature	-20°C - 60°C	-20°C - 60°C	-20°C - 60°C	-20°C - 60°C	-20°C - 60°C
	Storage Temperature	-20°C - 60°C	-20°C - 60°C	-20°C - 60°C	-20°C - 60°C	-20°C - 60°C
	Operating Humidity	10%-90% RH (non-condensing)	10%-90% RH (non-condensing)	10%-90% RH (non-condensing)	10%-90% RH (non-condensing)	10%-90% RH (non-condensing)
	Storage Humidity	10%-90% RH	10%-90% RH	10%-90% RH	10%-90% RH	10%-90% RH
Glass	Anti-glare	Yes	Yes	Yes	Yes	Yes
	Thickness (mm)	4mm	4mm	4mm	4mm	5mm
Power	Power input	USB HID. No driver required	USB HID. No driver required	USB HID. No driver required	USB HID. No driver required	USB HID. No driver required
	Power consumption (W)	<2.5W	<2.5W	<2.5W	<2.5W	<2.5W
Design	Color	Black	Black	Black	Black	Black
	Bezel size (mm)	33mm	30mm	30mm	36mm	51mm
Dimensions	Overlay Only (WxHxD mm) (Approx.)	1009 x 597 x 60 mm	1139 x 669 x 60 mm	1272 x 747 x 60 mm	1502 x 877 x 60 mm	1757 x 1035 x 65 mm
	Package Carton (WxHxD mm) (Approx.)	1080 x 600 x 150 mm	1260 x 760 x 150 mm	1380 x 860 x 150 mm	1615 x 990 x 150 mm	1870 x 1150 x 150 mm
Weight	Overlay Only (KG) (Approx.)	7,5 kg	9,5 kg	12,5 kg	18,5 kg	30,5 kg
	Package Carton (KG) (Approx.)	11,5 kg	13,5 kg	15,5 kg	21 kg	35 kg
Service and warranty	Warranty	3 years with advanced exchange	3 years with advanced exchange	3 years with advanced exchange	3 years with advanced exchange	3 years with advanced exchange



Inform, entertain and engage customers and colleagues with the power of touch

Infrared

Infrared overlay models use highly reliable infrared technology. This detects when infrared beams concealed in the overlay are interrupted by a finger or other solid object. This affordable solution offers smooth gesture recognition and accurate, low-lag touch response under any ambient lighting conditions.

Capacitive

Capacitive overlay models use capacitive technology – as found in tablets and smartphones – that directly senses physical proximity of the user's finger or a stylus. This allows extremely rapid response and smooth, speedy gesture recognition in an extremely slim bezel-free design.

Service and support

All Sony Professional touch overlays sold into the EU, Norway and Switzerland come supplied with a 3 Year PrimeSupport pack, offering unique services and benefits, including:

- Freephone telephone helpdesk support (00 800 7898 7898) in 5 languages.
- Receive a completely new replacement model rather than repair as standard.

PrimeSupport
● ● ● ●

Distributed by

For full features visit www.pro.sony/en_EU/BRAVIA-interactive

© 2018 Sony Corporation. All rights reserved. Reproduction in whole or in part without permission is prohibited. Features and specifications are subject to change without notice. All non-metric weights and measurements are approximate. 'Sony' and 'BRAVIA' are registered trademarks or trademarks of Sony Corporation. All other trademarks are the property of their respective owners.

Sony is the leading supplier of AV/IT solutions to businesses across a wide variety of sectors including, Media and Broadcast, Video Security, Medical, Digital Cinema and Displays. It delivers products, systems and applications to enable the creation, manipulation and distribution of digital audio-visual content that add value to businesses and their customers. With over 25 years' experience in delivering innovative market-leading products, Sony is ideally placed to deliver exceptional quality and value to its customers. Collaborating with a network of established technology partners, Sony delivers end-to-end solutions that address the customer's needs, integrating software and systems to achieve each organisation's individual business goals. For more information please visit www.pro.sony.eu

SONY

Follow us on Twitter at [@sonydisplays](https://twitter.com/sonydisplays) / www.twitter.com/sonydisplays